

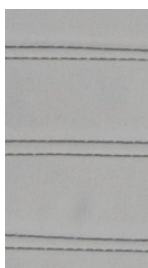
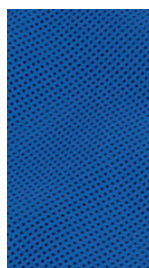
# Albatros II

## Active and therapy lift

**Patient lift with a vertical lift that's easy to use.** Albatros II folds in a few seconds for easy transport or storage. The design allows for stable lifting of a patient in a vertical position.



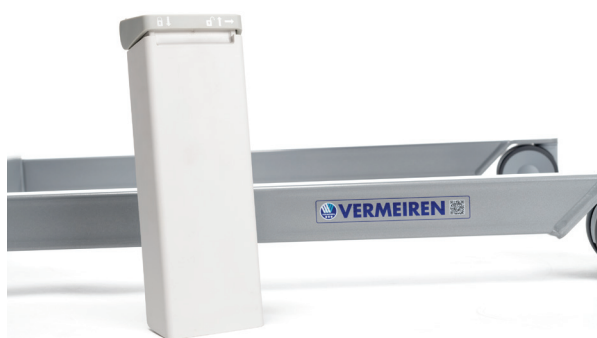
**VERMEIREN**  
we care for you



SLING SIZES	
Available in M - XL (standard or netted structure)	
M	XL
40-120 KG	100-150 KG

For Albatros II we offer a variety of sling systems that meet the highest quality standards and requirements for patient transfers. Available in a padded version or with a netted fabric depending on the individual needs.

## Colours



## Technical data

Total width (closed)	584 mm
Total width (opened)	945 mm
Total height min.	1380 mm
Total height max.	1687 mm
Total length	1115 mm
Folded height	500 mm

## Products designed to suit you

**VERMEIREN** always strives to come up with the best solution available to encompass your personal needs. As technology advances, so do we and as such we can offer you the most up to date products. This is the result of our continuous research and experience since 1957.

## Quality guaranteed

Regarding quality, the **Albatros II** complies with the highest norms, laid down by certified test institutes in most European countries.



Leg height / Frame height	117 mm
Weight	50,60 kg
Maximum user weight	150 kg
Additional info	CE

Measurements in mm and kg. Deviations in sizes and weight (15 mm and 1,5 kg) are possible. Subject to technical alterations. Images for illustration purposes only. Certain features may be optional.

## VERMEIREN UK LTD

Suite 1&2 Marshall Business Centre - Faraday Road  
HR4 9NS Hereford - United Kingdom  
Company registration number 16075613

[www.vermeiren.co.uk](http://www.vermeiren.co.uk)  
[info@vermeiren.co.uk](mailto:info@vermeiren.co.uk)



For more information, contact your local dealer

**VERMEIREN**  
we care for you